



**THE RESERVE**  
**AT LAKE KEOWEE**

COMMUNITY FOUNDATION  
*and*  
CHARITABLE FOUNDATION

---

**2010**  
ANNUAL REPORT

---

# THE RESERVE AT LAKE KEOWEE

## *Community Foundation*

The Reserve at Lake Keowee Community Foundation is a non-profit organization, created to enhance the quality of life and sense of community for property owners of The Reserve at Lake Keowee.

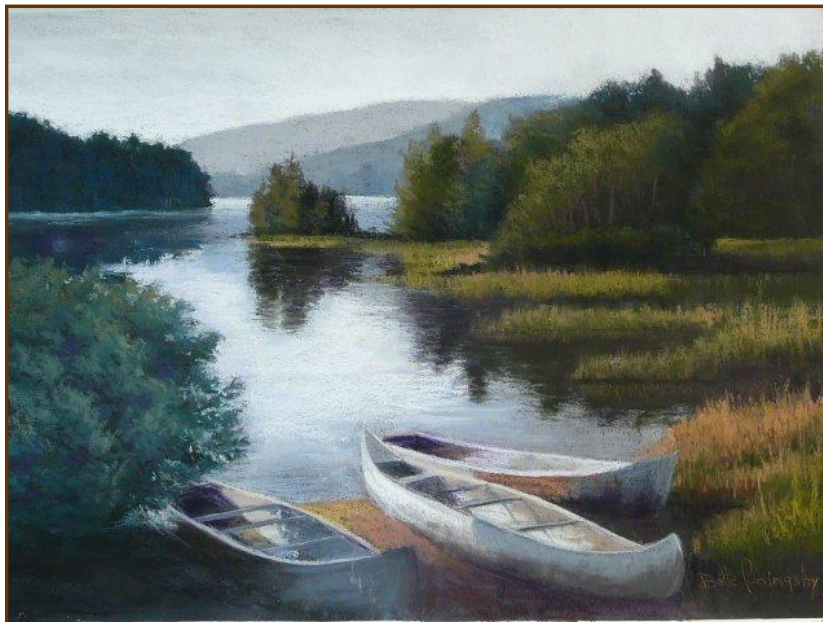
The Foundation has four major functions serving both the property owners and general public:

**Environment:** to promote environmental stewardship and provide a greater understanding and appreciation of the area's natural resources.

**Education:** to provide educational and enrichment programs for Reserve property owners and the surrounding community.

**Arts:** to promote cultural initiatives for property owners and the surrounding community, with both visual and performing arts.

**Outreach:** to assist charitable organizations and facilitate property owner volunteerism in Pickens County and surrounding communities.



*Pastel by local artist and RLK Foundation contributor, Bette Coningsby.*

*The Community Foundation is funded by  
a transfer fee of all real estate sales  
at The Reserve at Lake Keowee.*



In 2010 the Community Foundation completed its third year under the guidance of its executive director and naturalist.

Over 70 different events, featuring a variety of speakers and performers, were scheduled in 2010. The attendance for all these events exceeded 1,500 property owners and guests.

## ENVIRONMENT

*The 2010 Environmental program included the following:*



*Oconee Bell wildflower*

***Trail walks and personalized nature tours*** of many Reserve owners' private home sites guided by naturalist, Jeff Breazeale. Jeff used his science background and extensive knowledge of the area to highlight special natural features and animal habitats along the trails and on individual owners' home sites.

***Environmental Speakers*** addressed topics such as the lake, history and geography of the area. Specialists from the Department of Natural Resources, and local experts were invited in to speak on subjects ranging from native plants to gardening in South Carolina.

***Wild Bird Habitats*** were set up along the golf course and in wetland areas to help protect, preserve, and observe wood ducks, bluebirds, and other birds native to our area.



*Wood Duck*

***Trail Journal*** was updated seasonally and available on The Reserve website as a great source of information for Reserve property owners and the general public:

[www.reserveatlakekeowee.com/keowee/info/trail-journal.aspx](http://www.reserveatlakekeowee.com/keowee/info/trail-journal.aspx)

***Adopt a Highway*** was chosen as a project for the Community Foundation. The section of Highway 133 that runs parallel to The Reserve's property line became a quarterly clean



*Reserve volunteers gather for the Highway Cleanup*

up project. The Reserve Community donned their orange vests and collected over 1,485 pounds of trash in 2010. The first time this section was cleaned in February 93 bags of trash were collected. The final 2010 workday in October had only 14 bags—The Reserve is making a positive difference!

***Keowee Lake Sweep and Adopt-an-Island programs***

were a large part of the Foundation's commitment to the environment in 2010. Reserve volunteers took part in the bi-annual lake sweeps in April and September and joined the new Adopt-an-Island program with FOLKS (*Friends of Lake Keowee Society*). The Reserve is responsible for maintaining islands 17 A, B, C and D and several miles of shoreline as part of this community-wide effort to preserve one of the purest lakes in North America.



*Adopt-an-Island clean-up volunteers*



*One of the four RLK adopted islands*



*Pickens boy scouts help with the sweep*

# EDUCATION

The 2010 Educational program included the following:



Decorating with native plants workshop



Watercolor class with Pamela DeWitt

**On-site Workshops** in the Hill House gave participants an opportunity to learn more about The Reserve's history, natural resources, arts and crafts. Local experts were invited in to speak on subjects ranging from native plants, South Carolina gardening, and using native plants to decorate for the holidays. Area artists held classes on pastels, watercolor painting, and photography.





***Boat Safety Certification*** class was offered for the third year through the Foundation. Taught by the Department of Natural Resources, this class teaches basic boat safety and allows the certified student an opportunity to lower their boat insurance.

***Educational Field Trips*** explored nearby historical sites, state parks, a local vineyard and beer brewery. Participants enjoyed the chance to explore the area and get a taste of local flavor!



# ARTS

*The 2010 Arts program included the following:*

***Supported works of high artistic merit*** in literary, media, performing and visual arts by sponsoring a Fall Arts Festival and programs featuring such artists.

***The Hill House Art Gallery***, open to the membership and general public, at The Reserve Community Foundation office featured original art from regional artists. Exhibits were rotated on a six to eight week basis and included gallery talks from each of the artists.



*Artwork on display in the Hill House Gallery*

***Completed a third Artist-in-Residence program*** with the introduction of John Smith, a talented photographer from North Carolina. John enjoyed a one-week residency at The Reserve. He shared his talents as a scenic photographer



*Photo: Kevin Godfrey, EG:IMAGE Photography*

*Photographer, John Smith, dedicates his photo, "Quiet Morning at The Reserve."*

through three workshops held throughout the year for Reserve property owners and other interested participants. At the end of his residency, he presented The Reserve Community Foundation with a photograph for its permanent collection.

**Continued our alliance with the SC Humanities Council**

and other organizations to bring a variety of programs to The Reserve.

A *variety of classes* were hosted, including collaborations with Clemson University as well as local artists and instructors—from pastels and painting to flower arranging.



Kevin Godfrey, EG:IMAGE Photography

**Musical performances** were offered

S.C. Humanities performer as President Theodore Roosevelt

throughout the year including the harmony of a barber shop quartet, classical concerts, and various choral performances from Clemson University. Greenville’s Carolina Ballet Theatre also performed a special sampling of dances from each of their shows on the Orchard House Veranda.

**Meet the Artist** receptions allowed owners and guests the opportunity to meet visiting artists and experience their work.

**Fall Festival** showcased the talents of both Reserve and local artists. Reserve owners collaborated again to create a second community painting to joins its sister piece on display in the Market.



# OUTREACH

An Outreach Committee comprised of Reserve property owners was established in 2007 to research and recommend outreach volunteer projects with various non-profit organizations in the surrounding community.

Annually, the Foundation, a 501 (c) 4, transfers a minimum of 10% of its income to the newly established Charitable Foundation, a 501 (c) 3. The Charitable Foundation then combines this with proceeds from the Charitable Golf Classic for donation to selected area charities. This year represented the largest donation within any given year in the Foundation's history.

This year, the \$40,000 donation was disbursed on two separate dates. The first \$20,000 was awarded in April, representing 10% of the Community Foundation's 2009 income from transfer fees combined with the proceeds from the 2009 Charitable Golf Classic. An additional \$20,000, raised at the 2010 Charitable Golf Classic, was distributed in December at The Reserve Members' Club meeting.

## *A total of \$40,000 was donated to the*

**Helping Hands, \$10,000**

**Pickens County Meals on Wheels, \$10,000**

**Prevent Child Abuse Pickens County, \$10,000**

**Mary's House, \$10,000**

Photos: Kevin Godfrey, EG:IMAGE Photography



*The Foundation Outreach Committee pictured with the 2010 Outreach Recipients.*

In addition to the donations, several outreach projects were held throughout 2010. These projects were organized with the help of the Foundation's Outreach Committee:

- The Annual Pooches on Parade Benefit and Wine Auction raised \$4,600 for the Foothills Humane Society.
- 34 Reserve volunteers teamed up to deliver meals for Meals on Wheels along three routes in Pickens County
- 12 Reserve volunteers continued to develop a mentorship programs with students from AR Lewis Elementary.



Photo by: Beissy Banker

*Two Reserve pooches take a break from the parade route.*

If you would like more information on these or other opportunities to volunteer in the Lake Keowee area, please contact Kathryn at 864.481.4010 or [kgravely@reservekeowee.com](mailto:kgravely@reservekeowee.com)

Photos: Kevin Godfrey, EG: IMAGE Photography



*Wine Auction action at Turkey Ridge Park. All proceeds donated to the Foothills Humane Society.*

<i>Reserve at Lake Keowee <u>Community</u> Foundation</i>		
<i>Schedule of Revenue and Expenses</i>		
	<i>YTD 2010</i>	<i>YTD 2009</i>
<b>Fund Balance, Beginning of year - 1/1</b>	<b>\$ 353,131</b>	<b>\$ 448,562</b>
<b>Operating Revenue:</b>		
Transfer Fees:	56,412	58,960
Interest Income:	512	3,872
Other income:	-	<u>2,200</u>
	56,924	65,033
<b>Operating Expenses:</b>		
Programs & Events	7,225	21,208
Outreach	-	20,000
Trfr to Charitable Foundation	8,000	-
Management	46,537	76,589
Legal/accounting	15,254	5,085
G&A	<u>29,868</u>	<u>37,583</u>
	106,884	160,464
<b>Operating Deficit</b>	<b>(49,960)</b>	<b>(95,431)</b>
<b>Fund Balance, End of Year - 12/31</b>	<b><u>\$ 303,171</u></b>	<b><u>\$ 353,131</u></b>
<i>Reserve at Lake Keowee <u>Charitable</u> Foundation</i>		
<i>Schedule of Revenue and Expenses</i>		
	<i>YTD 2010</i>	<i>YTD 2009</i>
<b>Fund Balance, Beginning of year - 1/1</b>	<b>\$ 13,025</b>	<b>\$ -</b>
<b>Operating Revenue:</b>		
Charitable Golf Classic - net	\$ 26,600.00	13,051
RLK Member/Guest Special Contribution	4,968	
Trfr from Comm Foundation	<u>8,000</u>	<u>10</u>
	39,568	13,061
<b>Operating Expenses:</b>		
Outreach- 09 Fall Golf Tourney/Comm Fnd	20,000	-
Outreach-From 10 Fall Golf Tourney	20,000	
Legal/accounting	500	-
G&A	<u>39</u>	<u>35</u>
	40,539	35
<b>Operating Deficit</b>	<b>(972)</b>	<b>13,025</b>
<b>Fund Balance, End of Year - 12/31</b>	<b><u>\$ 12,053</u></b>	<b><u>\$ 13,025</u></b>

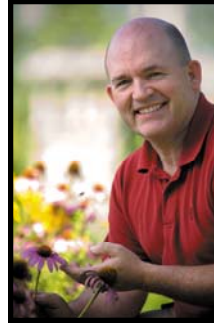
- Foundation Fees are collected on each property sale – ¼ of 1% of the sales price.
- Operating deficits are funded by accumulated revenue from transfer fees for prior years. Measures have been taken in both programming and administrative areas to help lessen future years' deficits.
- Remaining balance of funds accumulated in years prior to operation of the Foundation.
- Each year there is an annual transfer fee of at least 10% from the RLK Community Foundation income to be used for the Charitable Foundation's Financial Outreach.

**The Reserve at Lake Keowee Community Foundation's goals are directed by a Board of Trustees, composed of representatives of Greenwood Communities and Resorts, and Reserve property owners.**

*For further information on the Community Foundation, please contact the executive director.*



**Kathryn Coleman-Gravely**  
Executive Director  
864-481-4010 (office)  
kgravely@reservekeowee.com



**Jeff Breazeale**  
Naturalist  
864-481-4010 (office)  
jbreazeale@reservekeowee.com

*The Reserve at Lake Keowee Community Foundation offices are in the Hill House, located at  
534 Pine Grove Church Road  
Sunset, SC 29685*

---

**THE RESERVE AT LAKE KEOWEE**  
**2010 Community Foundation Board**

**Jay Nexsen**  
864-941-4034 (O)  
JNexsen@GreenwoodCR.com

**Robert Clement**  
864-868-9229 (H)  
robertclement@bellsouth.net

**Barbara Evans** (*outgoing 2010*)  
864-868-5470 (H)  
barbaraevans@evansgodfrey.com

**Jay Hall**  
864-868-2565 (H)  
susanandjayhall@bellsouth.net

**Chuck Pigg**  
864-868-5646 (O)  
CPigg@GreenwoodCR.com

**Joy Steverson**  
(864) 941-4016 (O)  
JSteverson@GreenwoodCR.com

**Bill Watkins**  
(864) 941-4074 (O)  
WWatkins@GreenwoodCR.com

**Georgia Elley** (*incoming 2011*)  
(864) 868-4535 (H)  
bgelley@att.net

# THE RESERVE AT LAKE KEOWEE

## *Charitable Foundation*

In 2010, the Community Foundation established The Reserve at Lake Keowee *Charitable Foundation*, a 501(c) 3, tax-exempt charitable entity.

The Second Annual Reserve at Lake Keowee *Charitable Foundation Golf Classic* was held in October of 2010. Thanks to an incredible number of participants, and sponsorships, the tournament raised **\$20,000** to be given to local charities in addition to the \$20,000 donation in April 2010. Property owners will help select the beneficiaries for 2011 charities in a poll sent out in 2011.



***124 players participated in the Charitable Foundation Golf Classic, collecting \$20,000 for local charities.***



*Photos: Kevin Godfrey, EG:IMAGE Photography*

# FOUNDATION EVENTS IN 2010



*Mike Panther adds a personal touch to the member art project*



*Local artist shows her crafts at the 2010 Fall Festival*



*Fireside Chat with Clemson Head Basketball Coach Brad Brownell*



*Carolina Ballet Theatre performs on the Orchard House Veranda*



*Mornings with Monet at the Hill House*



*Viva Voce from Clemson University*



*Holiday Tree Lighting*



*Panoramic landscape photographed by 2010 Artist-in-Residence, John Smith.*

## 2010 FOUNDATION EVENTS

### ◀ JANUARY ▶

- "Reserved" Art Show Featuring
- Bess Ciupaks & Stan Dubose
- Adopt a Highway

### ◀ FEBRUARY ▶

- Voting for 2010 Outreach Recipients
- Adopt a Highway Workdays

### ◀ MARCH ▶

- 2010 Artist in Residence John Smith Photography Exhibit
- SCANPO Conference
- "Bully" Teddy Roosevelt Play
- Zest Quest Mentorship Program

### ◀ APRIL ▶

- John Smith Artist Residency
- John Smith Photography Class
- 1st Outreach Distribution, \$20,000
- Mentor Field Trip to AR Lewis
- Viva Voce Concert
- Lake Sweep & Adopt an Island
- Community Day for Lake Sweep
- Thomas Creek Brewery Field Trip

### ◀ MAY ▶

- Jim Reel Exhibit
- Cedar Farms Herbs Presentation
- Adopt a Highway Workday
- Wine Auction
- Lucky Day Concert
- Pooches on Parade

### ◀ JUNE ▶

- Pamela DeWitt "Cracked" Exhibit
- Pamela DeWitt Art Class
- Native Gardening Workshop
- Johnson's Daylily Farm Trip
- Oconee Station Field Trip
- Mornings with Monet
- Wildflower Garden Workshop
- Special Project clean-up of historic Rackley Cemetery

### ◀ JULY ▶

- Members Art Show
- 4th of July Fireworks
- 'Snakes Alive' with Jeff Breazeale
- Wildflower Garden Workday
- Mornings with Monet
- Adopt a Highway Workday

### ◀ AUGUST ▶

- Fireside Chat with Clemson Head Basketball Coach Brad Brownell
- Bette Coningsby pastel exhibit
- Wildflower Garden Workday
- Mornings with Monet
- Irene Nemirovsky Play
- Victoria Valley Vineyard Trip
- Pastel Workshop with Bette Coningsby

### ◀ SEPTEMBER ▶

- Create Community Resident's Art Piece
- Carolina Ballet
- Mornings with Monet
- Lake Sweep & Adopt an Island
- Fall Festival
- 2<sup>nd</sup> Pastel Workshop with Bette Coningsby

### ◀ OCTOBER ▶

- Joe Sarchioto Woodwork exhibit
- Mornings with Monet
- Adopt a Highway Workday
- Charitable Foundation Golf Classic
- Hike to Jones Gap Park
- John Smith Workshop

### ◀ NOVEMBER ▶

- Mornings with Monet
- Swamp Rabbit Trail Trip
- Watercolor Workshop
- Decorating with Nature for Holidays
- Holiday Tree Lighting

### ◀ DECEMBER ▶

- Holiday Decorating and Entertaining
- 2<sup>nd</sup> outreach Distribution, \$20,000

2011 Foundation Events are listed in the  
Online Calendar of Events at  
[www.ReserveAtLakeKeowee.com](http://www.ReserveAtLakeKeowee.com)