

HOMESITE
LPC 2

PRICE
\$879,900

LISTING #
20178394

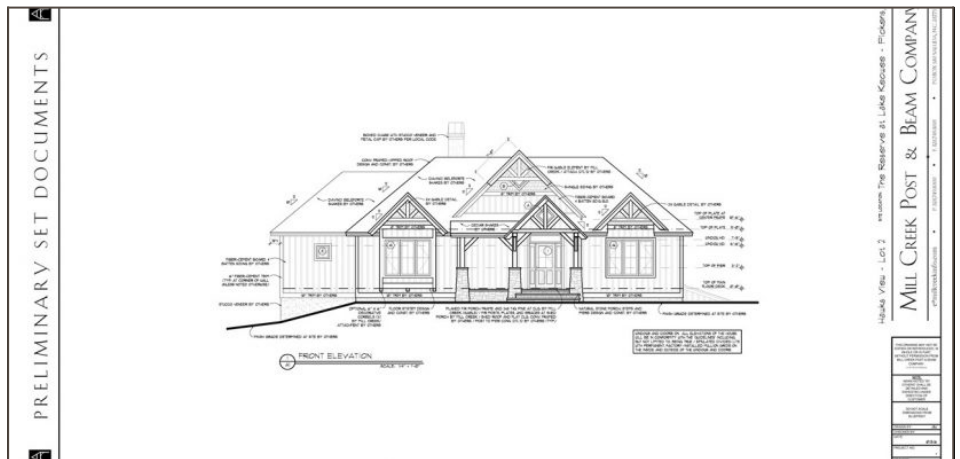
MAIN FEATURES

Bedrooms: 3
Bathrooms: 3 / 1
SQ. FT: 3500-3749
Style: Cottage
Roofing: Wood Shingle
Exterior Finish: Stone, Other - See Remarks
Foundation: Basement
Acres: 0.53
Lakefront: No
Lake Features: N/A

[View Listing Online](#)

[View On Interactive Map](#)

[View All Listings](#)



[View Image Gallery](#)

102 Laurel Pond Way, Sunset SC 29685

New construction! Mill Creek post & beam cottage has taken the very best of centuries-old woodworking and joinery and combined it with state-of-the-art modern technology to create timber frame homes and buildings that will stand for centuries. Inspired by the country homes and barns of yesterday, a Mill Creek home combines thoughtful design and craftsmanship while maintaining old world charm and style. The cottage has 3,688 square feet and overlooks the peaceful waters of Laurel Pond with just a short walk or golf cart ride to the Orchard House and the Village. Membership required.



Search available custom-built, ready-to-move-into homes and cottages. You'll find plenty of lakefront, golf, mountain-view, conservancy and village options from which to choose. Call our Resale Manager, Lisa Vogel, today to learn more about a particular home and schedule a private tour, 877.922.5253.

MASTER SUITE FEATURES

Master on Main Level
Shower Only

Double Sink
Walk-In Closet

Full Bath

INTERIOR FEATURES

Ceiling Fan
Category 5 Wiring
Cathdl/Raised Ceilings
Connection-Dryer-Electric

Electric Garage Door
Smoke Detector
Some 9' Ceilings
Connection-Dryer-Gas

Surround Sound Wiring
Gas Logs
Attic Stairs-Disappearing
Connection - Washer

Wet Bar
Countertops-Granite
Fireplace - Multiple
2-Story Foyer
Connection - Dishwasher

Walk-In Closet
Walk-In Shower
Glass Door
Central Vacuum
Connection - Ice Maker

Ceilings-Smooth
Fireplace
French Doors
Connection-Central Vacuum
Fireplace-Gas Connection

EXTERIOR FEATURES

Deck
Porch-Front
Glass Door
Satellite Dish

Insulated Windows
Porch-Screened
Landscape Lighting
Wood Windows

Driveway - Concrete
Underground Irrigation
Grill - Gas

LOT FEATURES

Pond
Shade Trees

Wooded

Underground Utilities

ADDITIONAL FEATURES

Age Range: To Be Constructed
Floors: 2
Storage: Floored Attic,Garage

Specialty Rooms: Yes (see below)
Heating: Heat Pump
Garage Capacity: 2

Basement: Yes (see below)
Cooling: Heat Pump

SPECIALTY ROOMS

Breakfast Area
Recreation Room

Living/Dining Combination
Laundry Room

Office/Study

BASEMENT

Yes
Walkout
Full
Ceilings - Smooth

Inside Entrance
Daylight
Heated

Finished
Garage
Cooled

HOA FEE INCLUDES

Security

Street Lights