

HOMESITE
F 60

PRICE
\$1,545,000

LISTING #
20177730

MAIN FEATURES

Bedrooms: 6+

Bathrooms: 5 / 1

SQ. FT: 5000-5499

Style: Other - See
Remarks

Roofing: Wood Shingle

Exterior Finish: Stucco-Masonry

Foundation: Basement

Acres: 1.73

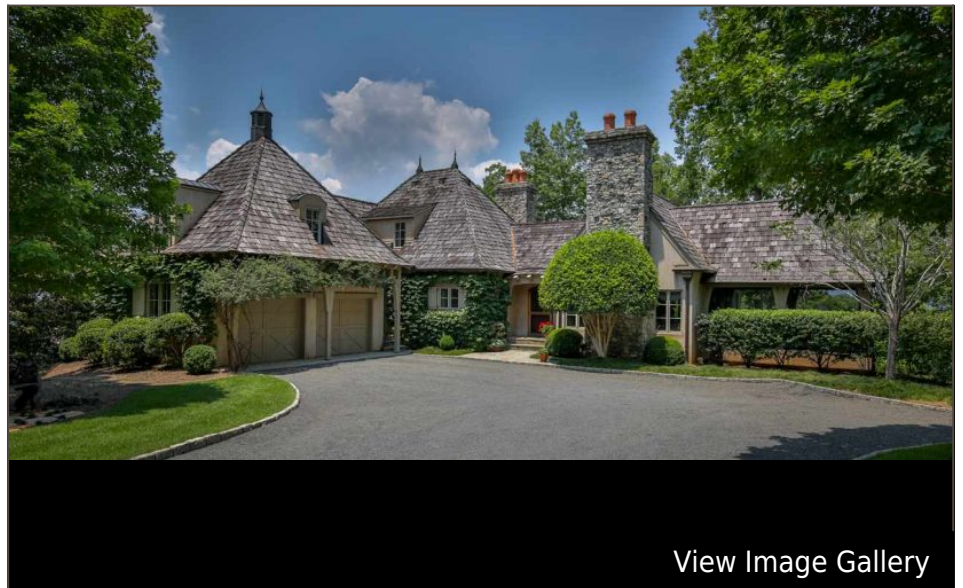
Lakefront: Yes

Lake Features: Dock-In-Place, Dock
in Place with Lift

[View Listing Online](#)

[View On Interactive Map](#)

[View All Listings](#)



[View Image Gallery](#)

820 Top Ridge Drive, Sunset SC 29685

Million dollar views on this side of Top Ridge Drive in The Reserve at Lake Keowee! Enter through the solid mahogany front door and long range layered mountain views and expansive water views await you. French Country design by Jack Arnold. Stone and masonry stucco exterior. Too many custom features to list: cathedral ceiling in great room with exposed hand-hewn beams; hand carved limestone fireplace, 4 masonry stone fireplaces, antique heart pine floors, antique light fixtures, custom cabinetry, wrought iron Juliette balconies. Gourmet kitchen featuring double ovens, huge granite island for overflow seating, Thermador gas cooktop with grill, two dishwashers and so much more. Perfect for entertaining, two screen porches plus two open porches to enjoy the incredible views of the lake and mountains. Upstairs there are 2 additional guest suites with private bathrooms. On down to the walk out terrace level, there are 3 bedrooms and 2 baths, entertainment room, second kitchen and beautiful walk out patio with stone arches to enjoy the view. Take the golf cart down the paved path right to the covered dock with boat lift. Full convertible membership which can be converted one time to a sports or social category - membership is required.



Search available custom-built, ready-to-move-into homes and cottages. You'll find plenty of lakefront, golf, mountain-view, conservancy and village options from which to choose. Call our Resale Manager, **Lisa Vogel**, today to learn more about a particular home and schedule a private tour, **877.922.5253**.

MASTER SUITE FEATURES

Master on Main Level
Shower - Separate

Double Sink
Tub - Garden

Full Bath
Walk-In Closet

INTERIOR FEATURES

Ceiling Fan
Smoke Detector
Some 9' Ceilings
Ceilings-Smooth
Countertops-Other
Fireplace
Laundry Room Sink
Central Vacuum

Electric Garage Door
Sump Pump
Wet Bar
Sky Lights
Walk-In Shower
Fireplace - Multiple
French Doors

Surround Sound Wiring
Cathdrl/Raised Ceilings
Walk-In Closet
Countertops-Granite
Alarm System-Owned
Some Window Trtmnts Stay
Built-in Bookcases

EXTERIOR FEATURES

Insulated Windows
Underground Irrigation
Driveway - Other

Porch-Screened
Wood Windows
Outdoor Fireplace

Porch-Other
Balcony

LOT FEATURES

Mountain View
Steep Slope

Wooded
Shade Trees

Water View
Water Access

ADDITIONAL FEATURES

Age Range: 11-20 Years
Floors: 3
Storage: Floored Attic,Basement

Specialty Rooms: Yes (see below)
Heating: Forced Air
Garage Capacity: 2

Basement: Yes (see below)
Cooling: Central Forced,Multizoned

SPECIALTY ROOMS

Breakfast Area
Laundry Room

Recreation Room
2nd Kitchen

Formal Living Room

BASEMENT

Yes
Walkout
Heated
Ceiling - Some 9' +

Inside Entrance
Daylight
Cooled

Finished
Full
Ceilings - Smooth

HOA FEE INCLUDES

Security

Street Lights